

Commercial
Realty Hub

Mixed Use

2 Retail + 4 Apartments

2417-2419 Grand Ave
Baldwin, NY 11510

At a Glance

Section:	54
Block:	102
Lot:	182
Lot Dimensions:	31'x128'
Appr. Lot SF:	4,490
Appr. Bldg SF:	4,900
Zoning:	Business
Land Description:	Mixed Use
Taxes:	TBD - See below

Features

Year Built:	1915
Parking:	4 spaces
Floors:	2

Available Parking Space

On Main Road

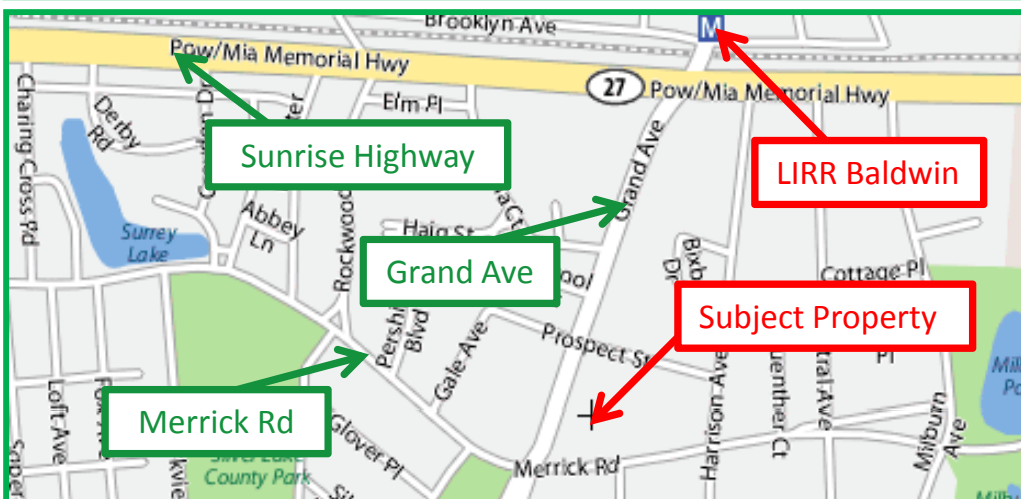
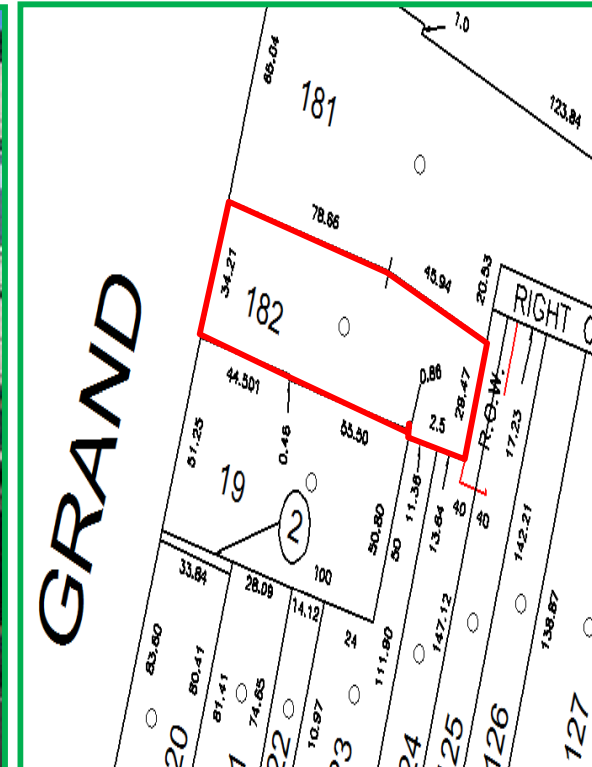
Just across from Baldwin Redvlp Zone

Near Public Transportation

Newly Renovated with New Roof

Currently 1 Retail space Vacant

Taxes are currently \$43,000 - incorrectly based on an 8,000sf structure - but will be reduced significantly to adjust to actual bldg size. Seller is will place difference of tax decrease in escrow.



For Further Information e-mail:
info@qbnngroup.com
 2121 Hillside Avenue
 New Hyde Park NY, 11040
 TEL: 516-280-4755

Asking Price
\$695,000

Information furnished herein has been obtained from sources deemed reliable. We have no reason to doubt the accuracy, but we do not guarantee it. All zoning, size, uses etc must be independently verified by you, your tax advisor, architect, lawyer etc. Information is submitted subject to errors, omissions, change of price, rental or other condition, prior to sale or lease or withdrawal without notice.