

Corner Vacant

Bldg at Light – Approx. 7,780sf

217-19/21 Merrick Blvd.
Jamaica, NY 11413

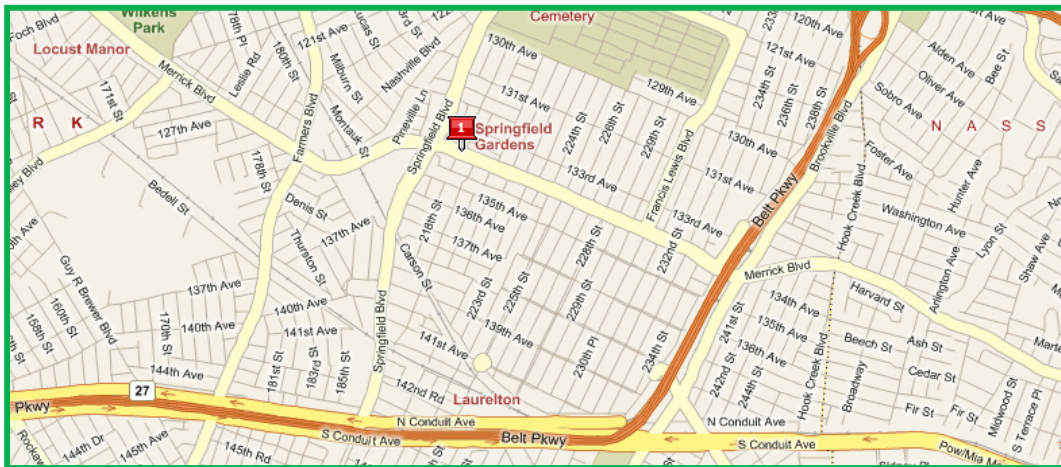
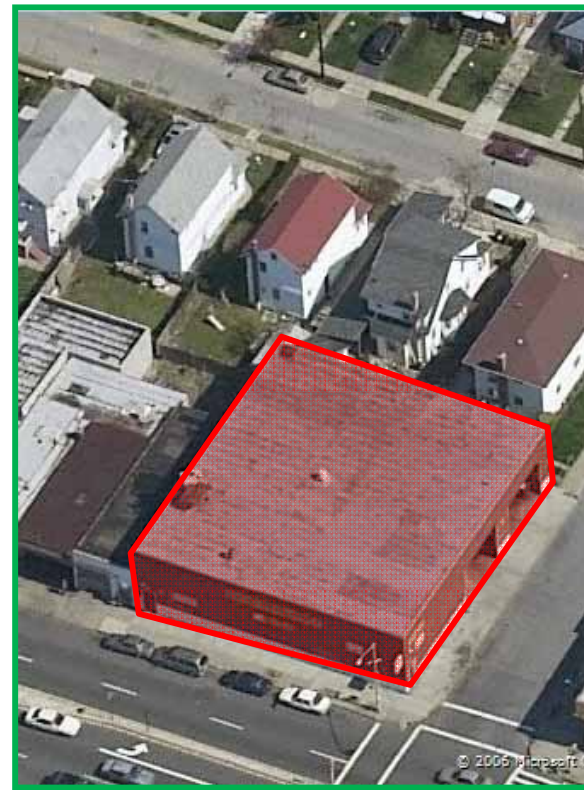
At a Glance

Section:	Queens
Block:	12956
Lots:	29
Lot Dimensions:	86' x 90'
Appr. Lot SF:	7,780
Bldg Dimensions:	86' x 90'
Appr. Bldg SF:	7,780
Zoning:	R5D/C2-1
F.A.R.:	2.0/1.0
Taxes (06/07):	\$ 16,676

Features

Year Built:	1929
Overhead Doors:	2
Floors:	1

- Corner Building On Main Road
- On Major Retail Corridor
- Near Public Transportation
- Close to Major Roadways
- All Commercial Uses Permissible
- Great for Mixed Use, Commercial Storage, Retail etc.
- High Ceilings
- Delivered Vacant
- Great for User



For Further Information e-mail:
info@qbnngroup.com
2121 Hillside Avenue
New Hyde Park NY, 11040
TEL: 516-280-4755

Asking Price
\$1,500,000